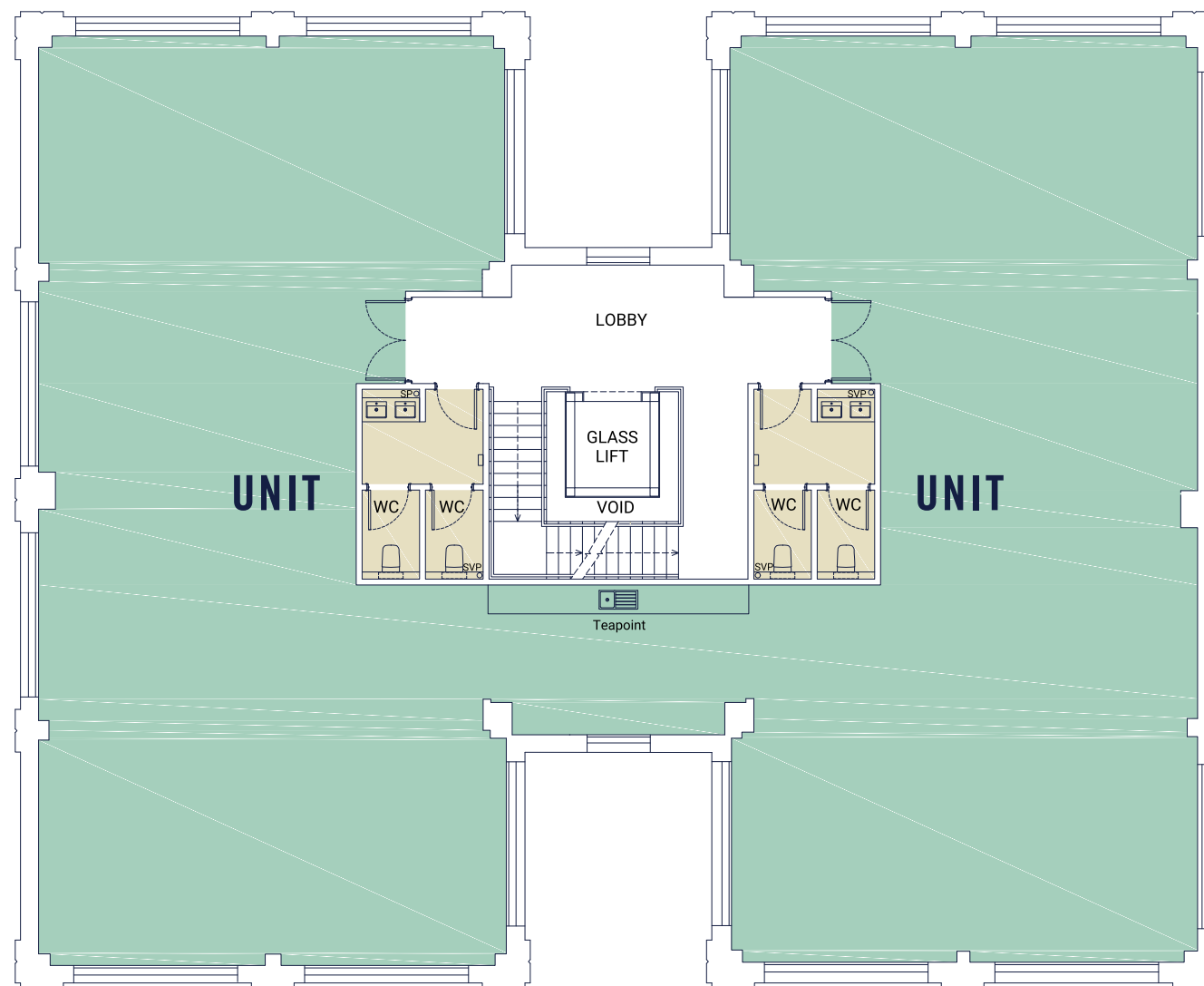


**KEY PLAN**



**FIRST FLOOR PLAN**

**FIRST FLOOR**

Office space - 353 m<sup>2</sup> / 3,800 ft<sup>2</sup>

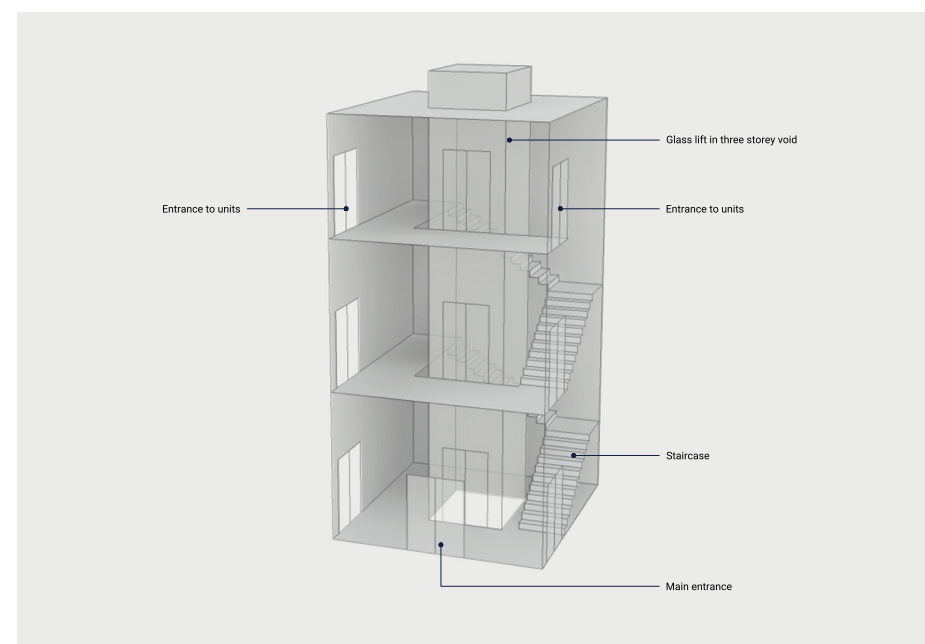
For enquiries and further information please contact:



CALL HARRY ON  
07721 128 796  
HANOVERGREEN.CO.UK



CALL NIALL ON  
07780 678 684  
MICHAELROGERS.CO.UK



**3D SKETCH OF CIRCULATION**

**BOOM BOX AT THE WIRELESS FACTORY**

Victory Business Centre, Fleming Way  
Isleworth TW7 6DB